

**WEBINAR**

**Personal Responsibility Education Program**



**FYSB** Family & Youth  
Services Bureau

Adolescent Pregnancy  
Prevention Program



# Fidelity and Adaptations for the New Normal

**April 18, 2023**

**Kelly Jean Gainor, M.Ed.**

**ETR**

# Live Virtual Training Logistics

## Logistics

- You are muted
- Check your computer audio volume & enable speaker
- If comfortable, share video

## Engagement

- Annotation tool
- Breakout rooms
  - Reactions
  - Chat box



# Learning Community Agreements

---

- Participate fully
- Delay distractions
- Honor different experiences
- Be brave and explore
- Remember that intent  $\neq$  Impact
- Others? (Type in chat)



# Objectives

---

By the end of this webinar, participants will be able to:

- Define fidelity and adaptation in the context of sexual health education programming.
- Identify core components, core pedagogy, and core implementation for at least one evidence-based program.
- Determine at least three reasons why adaptations may be necessary for successful implementation
- Practice thinking through potential adaptations using the “Adaptation Equation.”

# Agenda

Welcome and Introductions

Icebreaker

Fidelity, Adaptations, and Cookies

The Adaptation Equation

Small Group Activity

Creating Adaptations that Work

Q&A and Closing





# Icebreaker





# Fidelity, Core Components, and Cookies

---



# The Cookie Party

Dominique (she/her)



Riley (he/him)



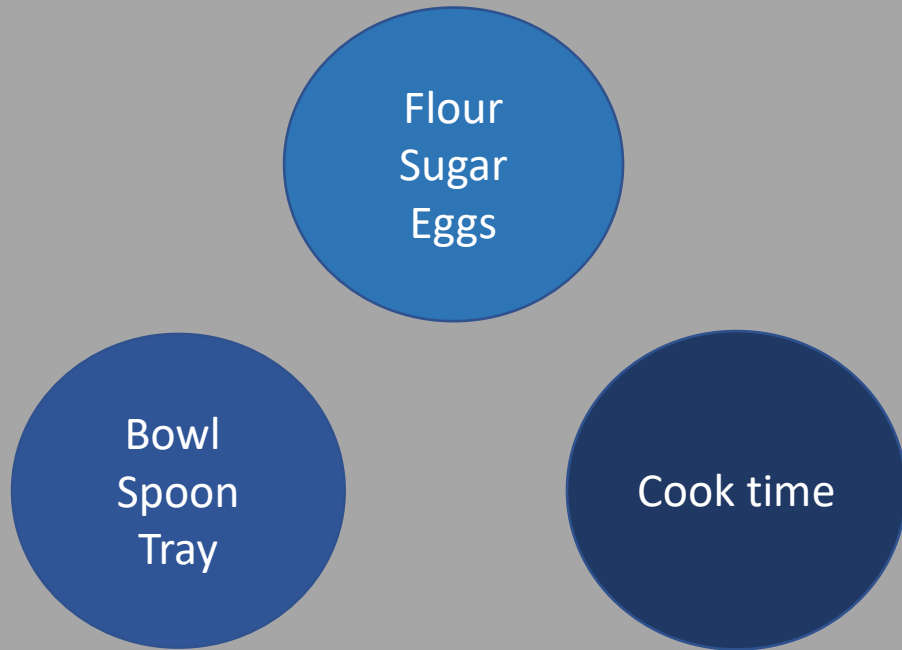
Jordan (they/them)



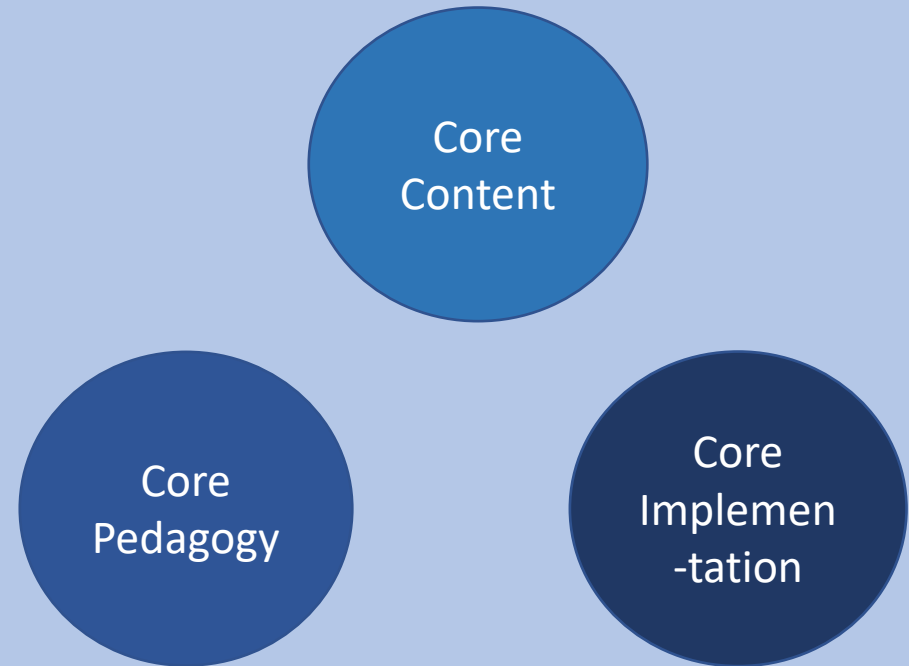


# Cookies and Curricula

## Cookie Main Ingredients



## EBI Ingredients



# Core Components

## Core Content

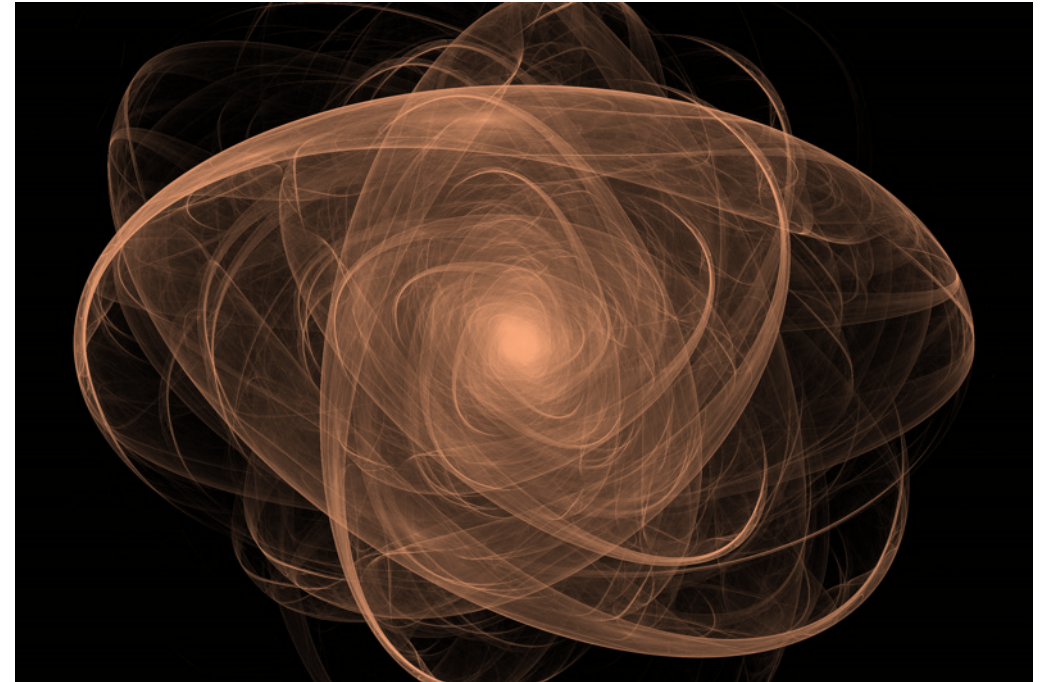
The essential parts that relate to what is being taught.

## Core Pedagogy

The methods, strategies, and techniques facilitators use.

## Core Implementation

The essential logistical elements of a program that lead to an environment conducive to learning.



# The Cookie Party

## Dominique (she/her)



- Fidelity
- Adaptation

**Result:** The cookies did not meet the needs of the group.

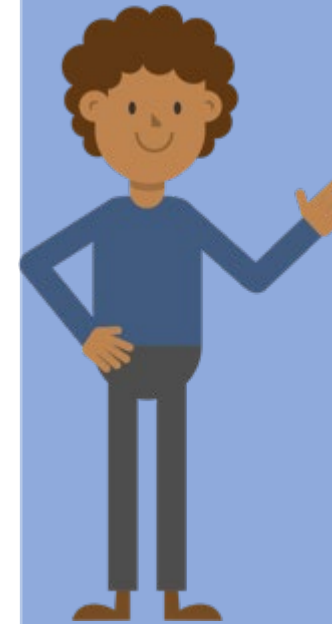
## Riley (he/him)



- Fidelity
  - Core content
  - Core pedagogy
  - Core implementation
- Adaptation

**Result:** The cookies did not meet the needs of the group.

## Jordan (they/them)



- Fidelity
- Adaptation

**Result:** The intended outcome was achieved. Everyone loved the cookies!



# Brainstorm:

What are some reasons  
for adapting a  
curriculum?





# Reasons for Adaptations

---

Cultural  
Relevance

Increase  
Interactivity

Virtual and  
Hybrid Learning

State Education  
Codes and  
Requirements

Racial and Equity  
Lens

School  
Constraints

Trauma-informed  
approaches

Community Fit

Increase Medical  
Accuracy

Circumstances  
beyond your  
control

Increasing  
Inclusivity

Linguistically  
Appropriate

Age Appropriate

# The Adaptation Equation

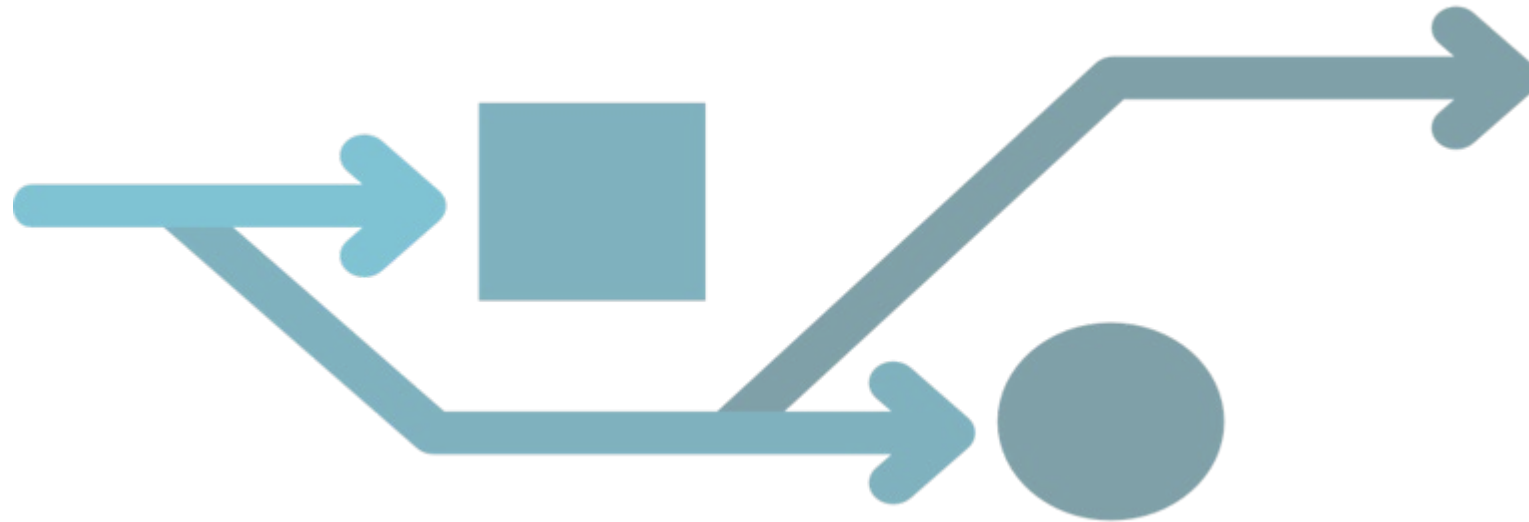
---

## *Focus on...*

- Module/Activity Goal/Objectives
- Knowledge, Skills, or Attitudes

## *Be sure to...*

- Plan & Map-out Adaptations
- Track, Document, & Reflect



# Breakout Activity!



# Breakout Activity

- Each group will receive a scenario where an adaptation may be necessary.
- Work together in your small groups to create a plan for adaptation using the adaptation equation.
- Be prepared to share in the larger group!





# Activity Debrief



# Creating Adaptations that Work

---

- Start simple
- Get creative
- Prioritize the young people
- Don't reinvent the wheel
- Reach out to the developer, they are here to help!





# Grantee Successes



# A Note on COVID-19





# Q&A



# Resources

---

[Navigating the New Norm | \*The Exchange\* \(hhs.gov\)](#)

[Getting Tech Savvy: A Guide to Virtual Prevention Programming with Teens | The Exchange \(hhs.gov\)](#)

[Fidelity\\_Statment\\_6-14-21.pdf \(etr.org\)](#)

[Fidelity Monitoring Tip Sheet \(hhs.gov\)](#)

[GeneralAdaptationGuidanceFINAL.pdf \(etr.org\)](#)

# Thank you!



Kelly Jean Gainor, M.Ed.  
[Kelly.gainor@etr.org](mailto:Kelly.gainor@etr.org)

