

# Advancing Health Equity through Innovation: OPA's Innovation Hubs

---

Office of Population Affairs, Child Trends with Power to Decide, Children's Hospital of Los Angeles, Education Training and Research Associates, Healthy Teen Network, Policy Research Group, and Research Triangle Institute

June 2004

San Francisco, CA



**OASH**

Office of  
Population Affairs

# Agenda

---

## Welcome to the Showcase!

- Housekeeping, Objectives, Some process ground rules

## OPA & Innovation Hubs Overview

## Meet the Innovation Hubs

- Each Hub will introduce themselves to the Showcase Community

## *Talk to the Hubs (Breakout Session)*

- Pitch Rotations (Learn more and talk to the 3 Hubs you are most intrigued by)
- **Bring your questions!**

## Presentation Objectives

---

1. Describe OPA's Innovation Hub program;
2. Describe the defining characteristics of each Hub; and
3. Make connection to an Innovation Hub(s) of interest, if they choose.

## About the Teen Pregnancy Prevention Program

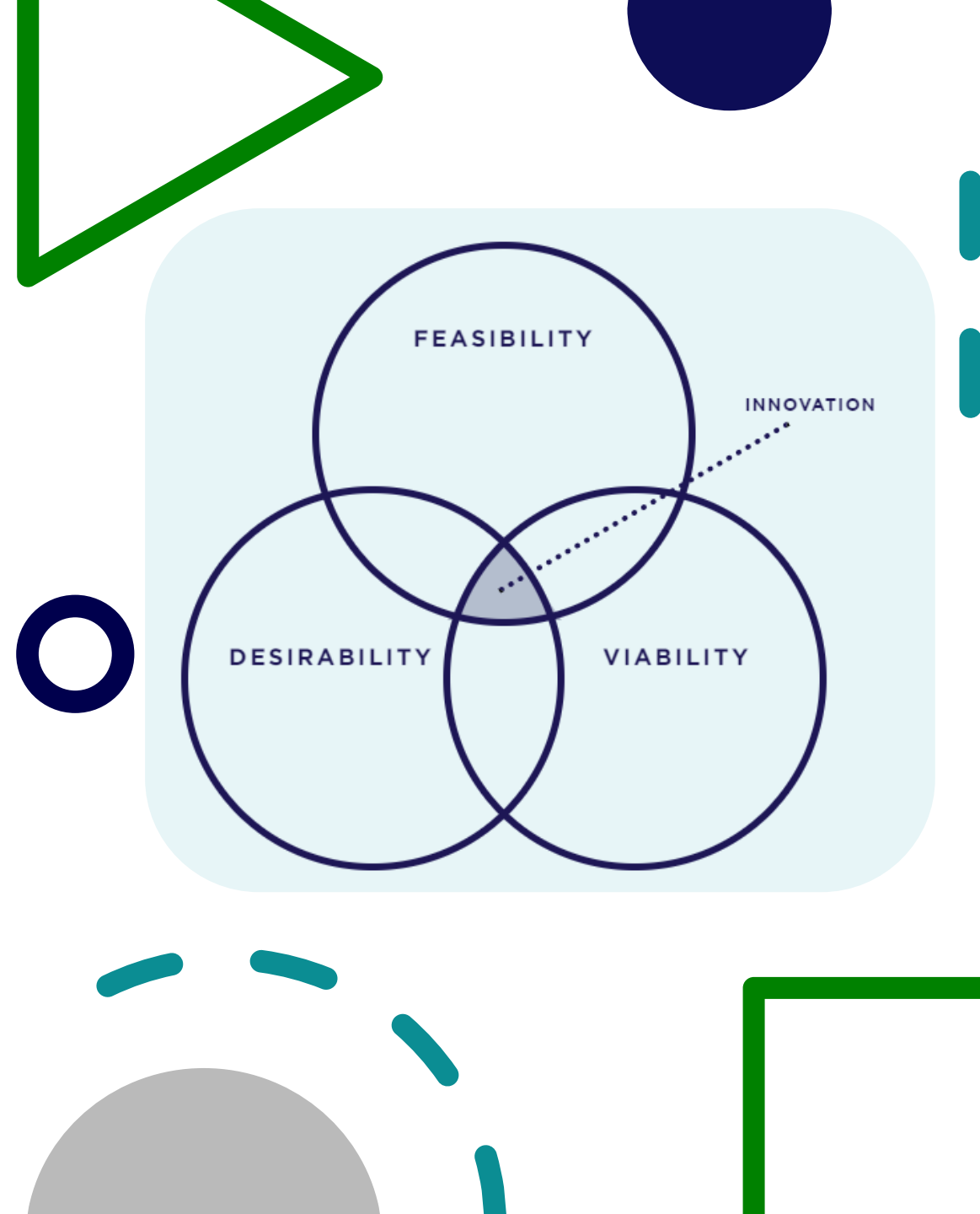
---

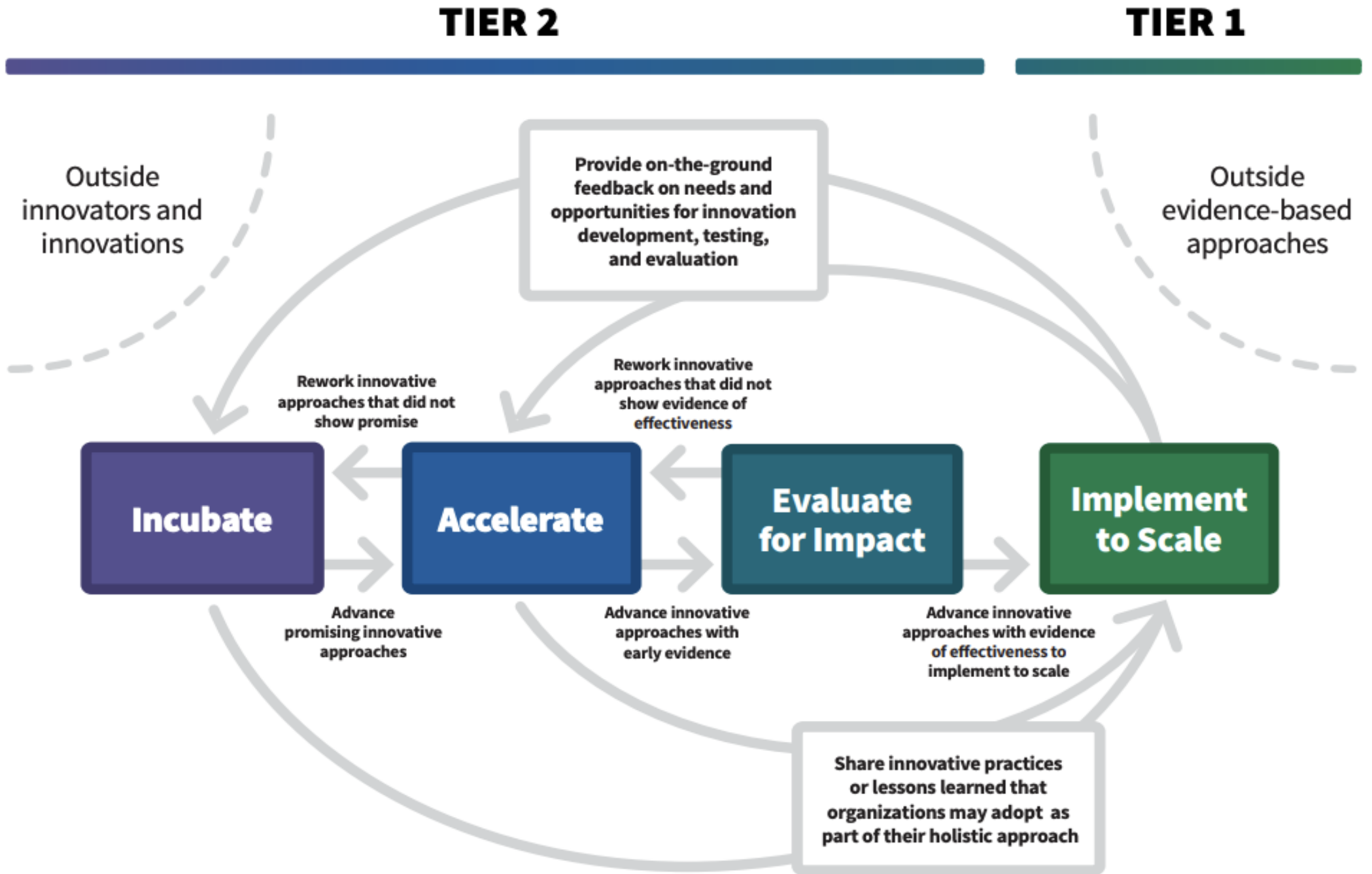
The Teen Pregnancy Prevention (TPP) Program envisions a nation where adolescents have the support, confidence, and resources to thrive, be healthy, and realize their full potential and rights

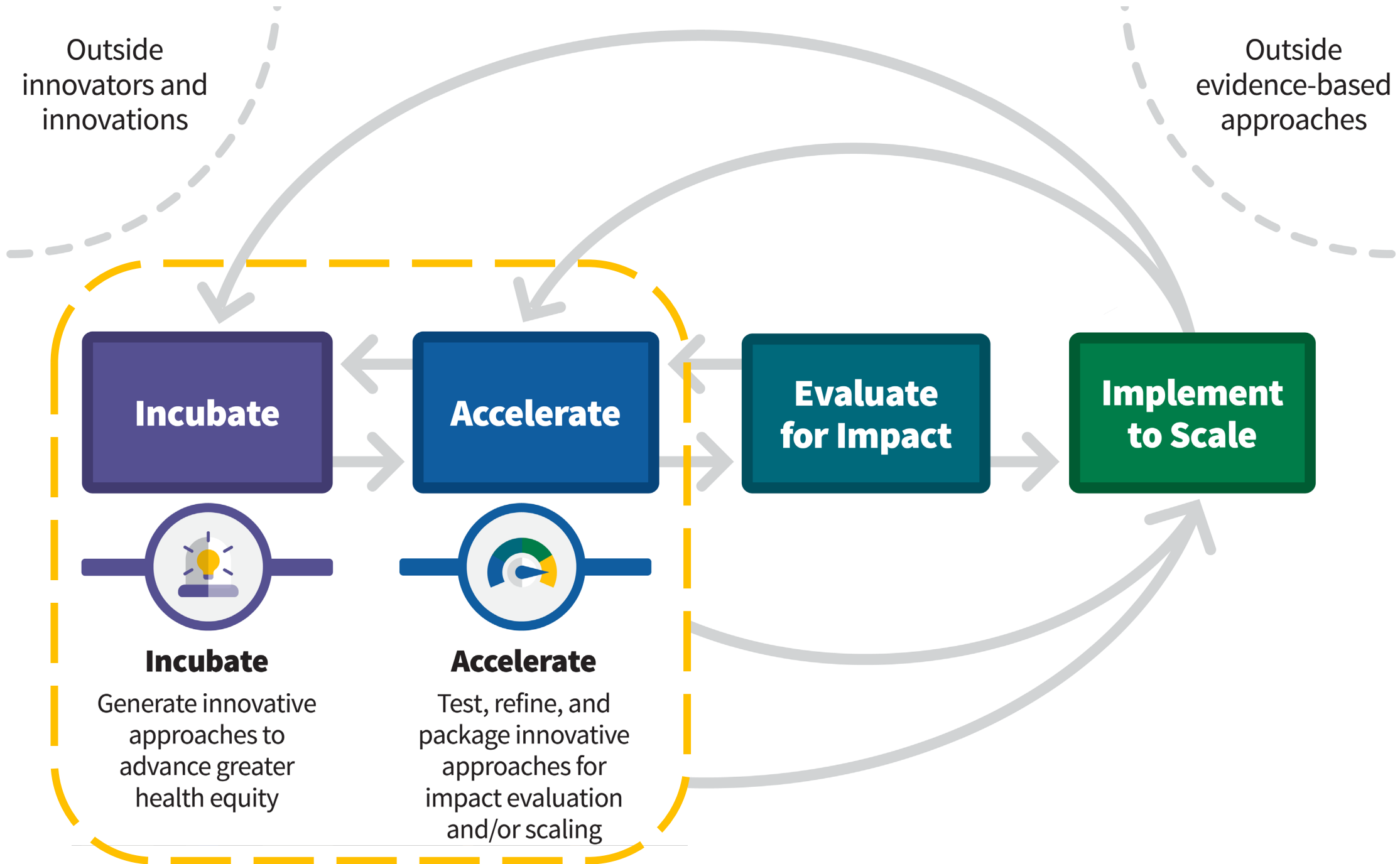
- Established in 2010 and funded through OPA
- National, evidence-based program
- Funds diverse organizations working to reach adolescents to improve sexual and reproductive health outcomes and promote positive youth development
- Funds two tiers of projects:
  - ✓ Implementation of evidence-based programs (Tier 1) and
  - ✓ Development and evaluation of new and innovative approaches (Tier 2)

# Creative, Disciplined, and Community-led Solution Building

- Innovation refers to “the ability to generate and execute new ideas—incremental, evolutionary, or revolutionary—and it starts with creativity. Creativity is the ability to look past the obvious—to transcend traditional ways of seeing the world to create something new” (IDEO)
- For OPA TPP, innovation reflects a broad spectrum of new or adapted products, programming, strategies, approaches, interventions, policies, and practices **that aim to prevent unintended teen pregnancy, prevent STIs among adolescents, and promote positive youth development**







Outside innovators and innovations

Outside evidence-based approaches

**Incubate**

**Accelerate**

**Evaluate for Impact**

**Implement to Scale**



**Incubate**

Generate innovative approaches to advance greater health equity



**Accelerate**

Test, refine, and package innovative approaches for impact evaluation and/or scaling

Outside innovators and innovations

Outside evidence-based approaches

*We are looking for teams that have identified a specific gap in existing TPP approaches they want to address, but no solution (yet)*

**Incubate**

**Ac**



**Incubate**

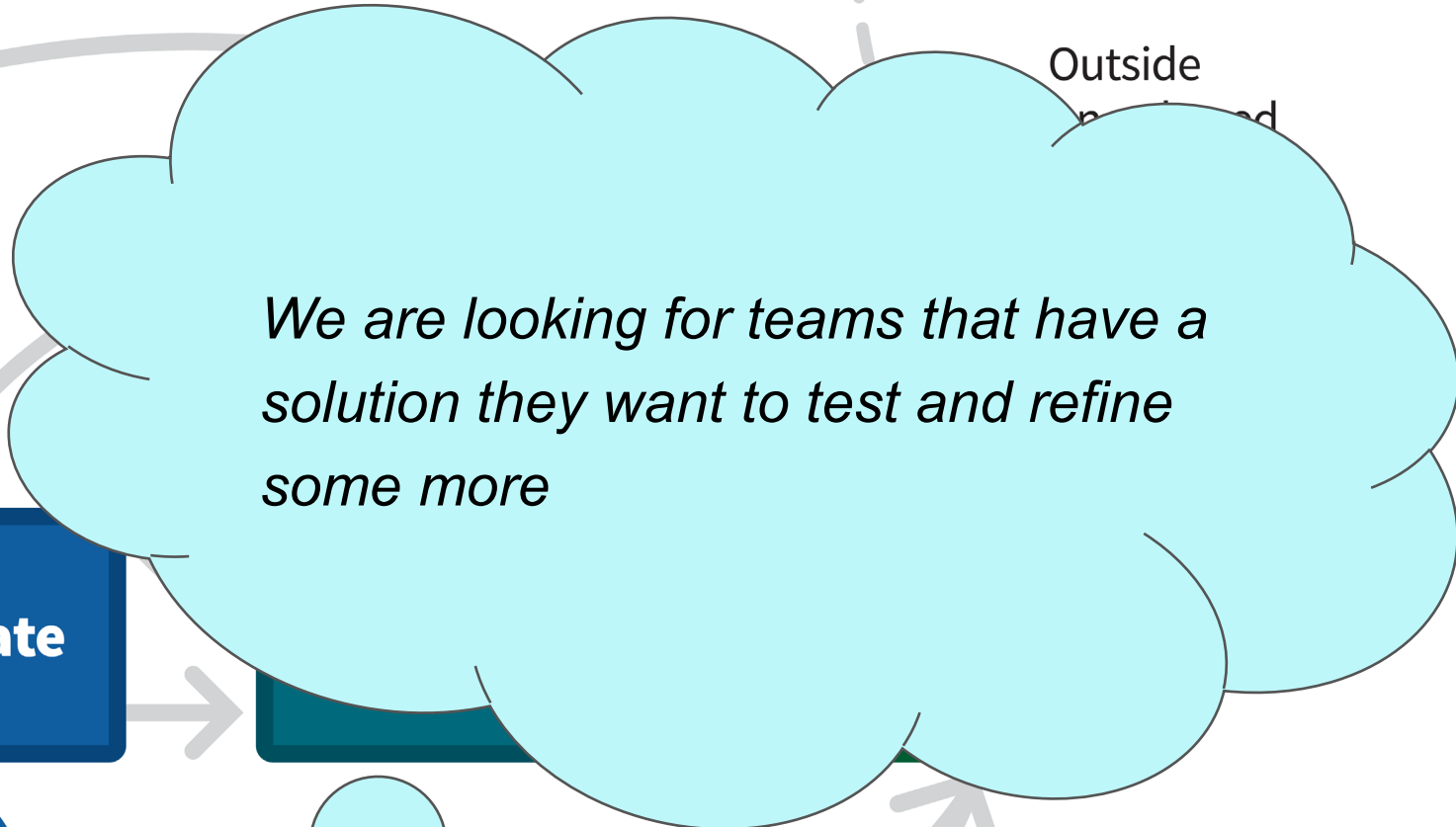
Generate innovative approaches to advance greater health equity





Outside innovators and innovations

Outside innovators and innovations



**Accelerate**

Test, refine, and package innovative approaches for impact evaluation and/or scaling



# We Hope You Join Our Vibrant Community!

OPA innovation is a prolific catalyst of evidence-based, equity-advancing TPP approaches for the field

- Over half (28) of all programs (52) on the TPP Evidence Review (TPPER) were developed or tested through TPP
- In the most recent announcement of the new OPA-funded impact evaluations, 42% came directly from OPA's Innovation Networks

Our innovators co-design alongside youth, caregivers, and community members, not just building more responsive innovations, but also empowering ongoing community action

## Innovation Projects

In May 2023, OPA convened 50 innovation teams from the TPP Program, Title X, and our research and evaluation grants to build relationships, workshop their innovations, and fine tune their design skills. Four showcase videos resulted from that event. Watch our compilation video to learn more about how OPA integrates innovation into our grant programs. Watch the other three video shorts to learn more specifically about innovations for engaging and supporting families, advancing adolescent health equity, and improving health care access and service delivery.



## Learning and Dissemination





# Introducing Innovation Hubs

---



**OASH**

Office of  
Population Affairs

## Innovation Hubs

---

### Incubators

- **In/Tend – Healthy Teen Network**
- **youthink – Children’s Hospital of Los Angeles**

### Hybrid

- **RYSE – Education, Training, and Research Associates**

### Accelerator

- **Breakthrough – Child Trends**
- **LAUNCH – Research Triangle Institute**
- **TISH – Policy and Research Group**



**Innovation Hubs**

# Talk to the Hubs!

---

## Hub Pitch Session

- Meet with different Hubs
- Each rotation will last for about 9 minutes
- Feel free to dig in and ask questions

## Learn More About OPA

---



Visit our website: [opa.hhs.gov](http://opa.hhs.gov)



[Subscribe](#) to the OPA e-newsletter to learn more about OPA!



Connect with us on LinkedIn:

[www.linkedin.com/company/hhs-office-of-population-affairs-opa](http://www.linkedin.com/company/hhs-office-of-population-affairs-opa)



Follow us on Twitter: [@HHSPopAffairs](https://twitter.com/HHSPopAffairs)



Watch our videos on YouTube:

[www.youtube.com/c/HHSOfficeofPopulationAffairs](http://www.youtube.com/c/HHSOfficeofPopulationAffairs)

# In/Tend

Milagros Garrido and April Lat



a Healthy Teen Network incubator

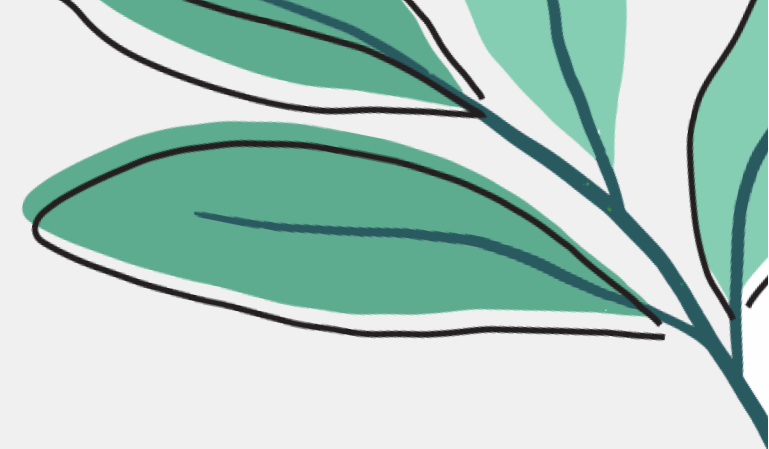






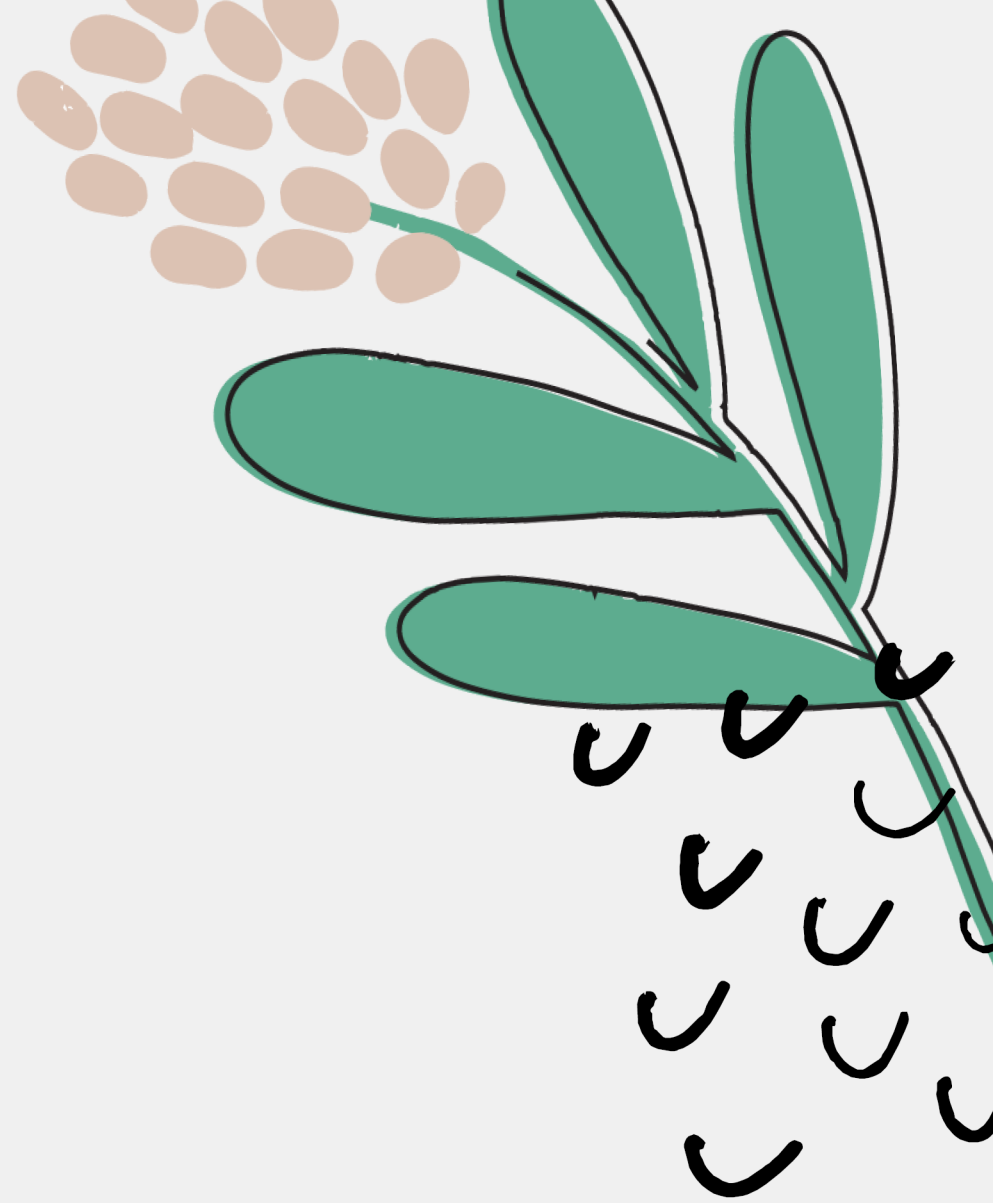
, the incubator hub by

Healthy Teen Network, is a vibrant ecosystem of dreamers, doers, and change-makers who push the boundaries of imagination in adolescent health.



# Vision

A world that affirms & celebrates every young person for who they are & ensures that they have they agency, opportunity, & equitable access to prioritize their bodies, relationships, & futures



# Who are we looking for?



Teams of 3 individuals with history working together



Teams commit to working intensively for 7 months, from October 2024 through the end of May 2025



Multidisciplinary teams with diverse skills and lived experiences

What should  
you bring?



Passion

Flexibility

Openness



“In/experience”



What else  
matters?



Diversity

Young people, ages 18-24



What do we  
bring?

Expert coaching

Funding up to \$90,000

Platforms to share and gather ideas

Virtual and in-person sessions

Equity-focused approach

Supportive cohort



# What's the application process?

**Choose your own adventure**

July 10 – July 24

**Prepare**

June 26 – July 10

**Reviews**

August

**Interviews**

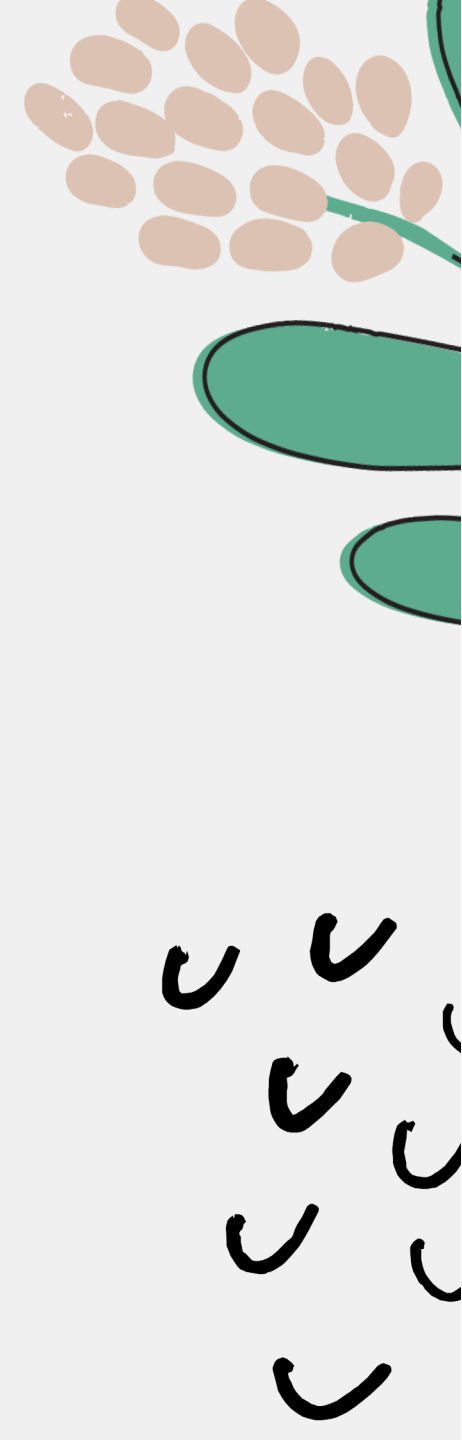
Early September

**Invitations**

Late September

**Cohort 1 Begins**

By early October





Thank you!



Learn more & get our email updates  
[www.healthyteennetwork.org/intend/](http://www.healthyteennetwork.org/intend/)

Email us  
[innovation@healthyteennetwork.org](mailto:innovation@healthyteennetwork.org)

Follow us  
[@HealthyTeenNetwork](https://www.instagram.com/HealthyTeenNetwork)







youthink



Powered by Children's Hospital Los Angeles

Incubator Hub

# Our Vision

We envision a world where adolescents have the support, confidence, and resources to thrive, be healthy, and **build their most brilliant futures.**



POWERED BY CHILDREN'S HOSPITAL LOS ANGELES

# Who We Are

The *youthink* incubator hub, powered by **Children's Hospital Los Angeles (CHLA)**, offers access to a diverse array of innovators and subject matter experts committed to supporting your team.

- Direct Service Providers in Adolescent Health
- National Capacity Building Providers
- Innovation Expertise
- Community Driven Approaches
- Academic Research Center



POWERED BY CHILDREN'S HOSPITAL LOS ANGELES

# What We Offer

**Innovation Expertise:** Design thinking education and resources to develop your ideas into tested solutions

**Training:** Interactive workshops to gain and practice skills

**Financial Support:** Financial resources to support your process

**Coaching:** Individualized coaching to guide you through your innovation journey

**Subject Matter Experts:** Access to adolescent health professionals and direct service providers tailored to your interests and needs

**Community:** An expansive network of passionate professionals and peers



# Does This Sound Like You?

- 1) See a **problem or gap in your community** that is impacting the health of young people?
- 2) Want **support, resources** and **funding** to tackle this problem?
- 3) Excited about **creating lasting change in your community**?

**If you answered “YES” to all 3 questions...*youthink* is the place for you!**



# Timeframe & Commitment

youthink incubator program lasts for **6 to 8 months**, with a commitment of **5 to 15 hours per month**

**Two fully funded in-person gatherings**, with the first one happening in sunny **Los Angeles, CA**

**Ongoing virtual trainings, coaching sessions, and independent work** to keep you engaged



# Ready to Apply?

The first round of applications are currently open!

Offers will be made in **August 2024**.

Our 1<sup>st</sup> cohort will launch **September 2024**.

# Connect With Us!



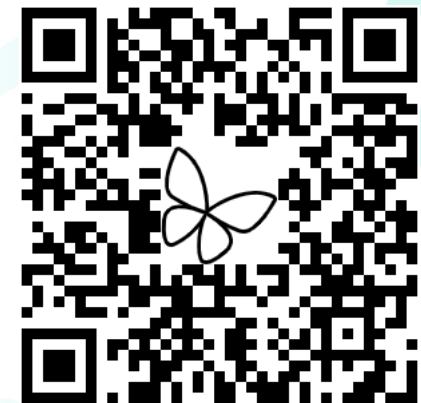
[youthink.health](https://youthink.health)



[youthink@chla.usc.edu](mailto:youthink@chla.usc.edu)



Link to youthink.health



POWERED BY CHILDREN'S HOSPITAL LOS ANGELES





Adolescent Pregnancy Prevention Grantee  
Conference

June 25, 2024

advancing  
health  
equity

etr.



**ETR is a non-profit organization that envisions a world where all individuals and communities achieve their best health. Through our work, we improve the health and well-being of youth and communities by championing science.**





# About RYSE Innovation Hub

## Hub Type

We are the only **hybrid** innovation hub that will be working with both incubator IDTs and accelerator IDTs.

## Our Vision

Every young person has personal agency and access to the resources and opportunities needed to achieve the best possible sexual health and well-being.

# RYSE Core Values

- + **Youth at the Center** – centering youth expertise and sharing power
- + **Health Equity** – elevating innovations that seek to eradicate health inequities
- + **Positive Sexuality** – honoring pleasure, relationships, trust and communication
- + **Healing-Centered & Trauma-Informed** – cultivating conditions that support safety, identity, compassion, trust, agency, hope and resilience
- + **Science-based** – guided by transdisciplinary and rigorous methods
- + **Curiosity, Innovation & Continuous Learning** – remaining curious and inquisitive

## A team should apply to RYSE if:

- + Your innovation addresses sexual and reproductive health inequities
- + Your innovation authentically and meaningfully engages youth at all stages
- + Your innovation is in development (must have a prototype)
- + Your innovation team includes youth members (up to age 24)
- + Your innovation team is interested in developing and/or refining a theory of change with a focus on addressing equity issues in adolescent sexual health
- + Your team is ready to engage in innovation and learn with us for 12 months

## What RYSE offers

- + Subject Matter Expertise
- + Individualized Coaching & TA
- + Collaborative Youth Engagement
- + Peer-To-Peer Support
- + Funding
- + Resources & Tools



## IDT Cohort Details

- + Each cohort is funded for 1-year with an option to re-apply
- + 4-6 IDTs per cohort e
- + Cohort launch planned for Fall 2024

## Application/Recruitment Process

- + Letter of Interest – due June 11th
- + Full Application (Invite only)
- + Short Interview with Team (Invite only)



# Connect with us.

Learn more at [etr.org/ryse](http://etr.org/ryse)

Sign up for our newsletter at [etr.org/newsletter](http://etr.org/newsletter) and follow us on social media.







scaling youth-centered solutions for sexual and reproductive health equity



# Our Team

---



# You should apply if you:

---

- Have a passion for **advancing ASRH equity** that considers the root causes of sexual health disparities
- Have a program, product, or idea (big or small) that has been **designed or tested** with the intended audience
- Get excited about the idea of being **part of a cohort** to work on your idea
- Feel comfortable with an **iterative** process of continuously designing, testing, and refining



# Our Vision

---

We want all products and services for young people to be:

- informed by young people's lived experiences;
- created with young people; and
- accessible, particularly for those who face systemic barriers to sexual and reproductive health and wellbeing.

# Our Mission

---

To champion and support teams of innovators as they test, refine, and scale youth-centered innovations. Our approach combines human centered design, with equity focused resources, training, and coaching.



# What you will get through Breakthrough

---



\$100,000 in funding



Tailored guidance and support with access to resources/tools



Peer learning



In-person workshops with opportunities to showcase your work

An opportunity to join an alumni network of Breakthrough innovators!

# What will your involvement look like?

---

Selected teams will join a 9-month program (September to May) and:

- Attend two in-person learning workshops (2.5 days each)
- Attend one Demo Day
- Join weekly or bi-weekly coaching calls with an expert coach
- Participate in 1-2 shared learning activities with your accelerator cohort per month
- Work with your team to advance your innovation
- Provide structured feedback to the Breakthrough learning agenda team to improve the cohort experience

# Our Application Process





# Application Process/Timeline

---

## **Step 1: Attend an office hour in the spring!**

Ask any questions you want with the BAH team

## **Step 2: Video and written application**

- Upload a video (less than 5 minutes) introducing your team and why you're interested in joining the Breakthrough Accelerator
- Submit a written application

## **Step 3: Interviews**

- Participate in a 30-45-minute interview with our team

## **Step 4: Selection Decision**

- Teams will be notified of selection decisions

# I'm interested, what's next?

---



- Learn more about us and how to apply on our website: <https://breakthrough.fund/>
- Applications will open early summer
- We will have office hours in the spring
- Reach out to us with any questions via email at [BreakthroughAccelerator@childtrends.org](mailto:BreakthroughAccelerator@childtrends.org)



Thank you

 Launch



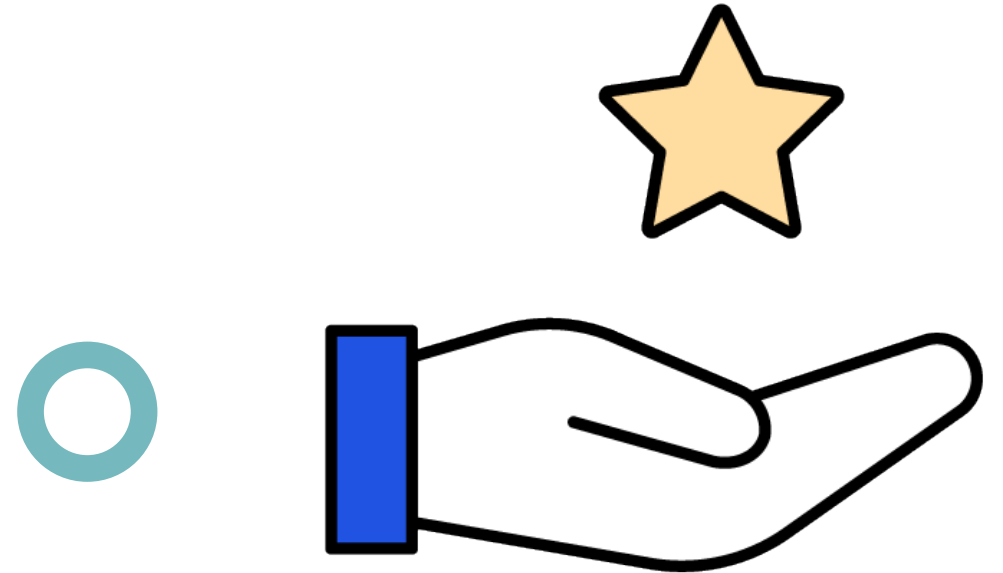
# Who Are We?

- We are an accelerator hub led by RTI International with partners Youth Collaboratory, Healthy Teen Network, Sister Love, and Power to Decide.
- Launch seeks to disrupt the current status quo in adolescent health by seeking out, recruiting, and partnering with teams of innovators that have identified initial or emergent solutions to current gaps in evidence for promoting adolescent sexual health.



# Guiding Principles

- Teens are able to make their own decisions about sexual and reproductive health.
- Teens and communities hold the solutions to challenges.
- A robust cohort approach will lead to more diverse innovations.
- Centering equity is critical.
- Failures and opportunities for improvement will be actively sought.
- Innovation will thrive in a space that welcomes diverse ideas, embraces a culture of trying it out, and supports sharing and collaboration across teams and partners.



# You should join Launch if you...

---



Have a solution that addresses a problem in sexual health outcomes for youth



Are passionate about improving sexual health of young people



Have feedback from end users after testing or implementing your solution



Have ideas for how to improve your solution

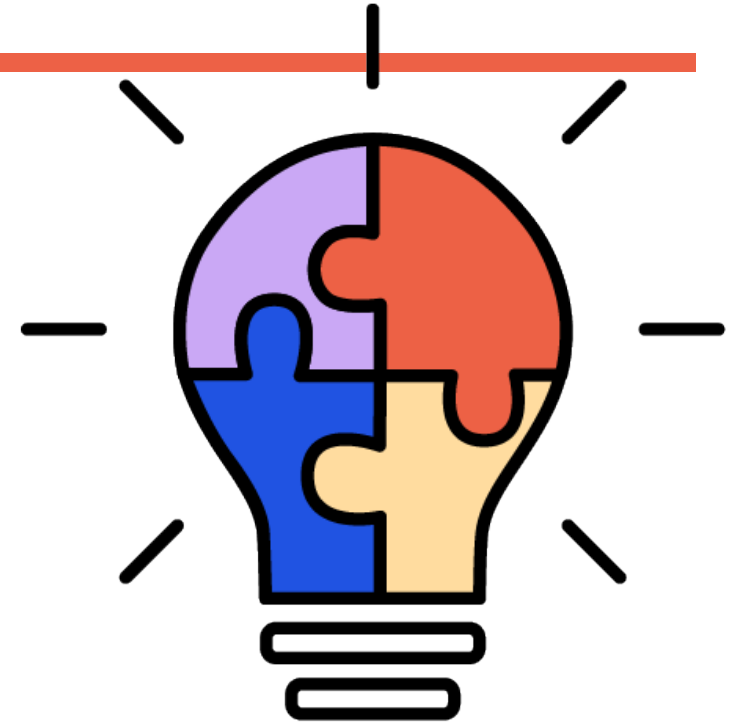


Are ready to participate in a 12-month program to accelerate your idea.

# We are looking for innovations that are ready to accelerate

---

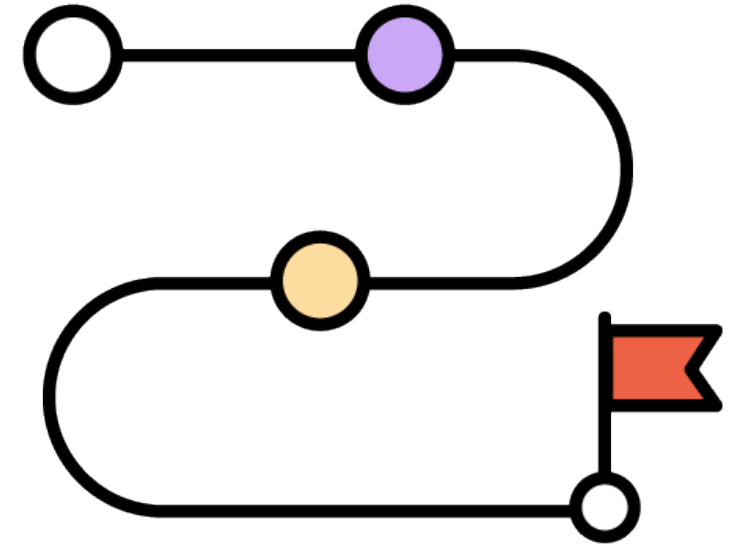
- Stage 3- You have a team with the necessary knowledge and know-how to develop your innovation, have developed your idea or prototype, and have obtained feedback from some end-users about its usefulness – how you would like to refine it and begin to evaluate its impact.
- Stage 4- You have a team with the necessary knowledge and know-how to develop your innovation, have developed your idea or prototype, have obtained feedback from some end-users about its usefulness, and evaluated its impact – now you are looking to scale it up or refine your approach.





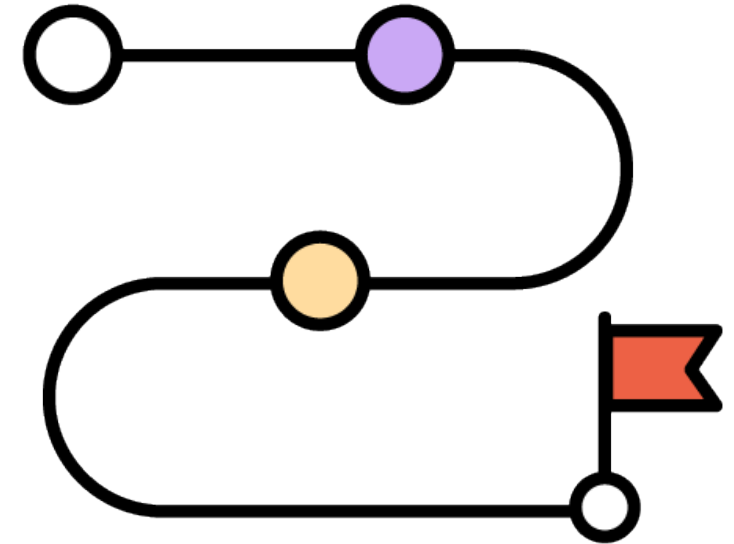
# What Launch offers?

- IDTs will participate in a 12-month cohort experience including:
  - Deep expertise delivered in workshops and trainings by Launch staff
  - Funding to support the further development of innovations (up to \$150,000)
  - Individualized coaching to support and address your unique needs
  - Connections and capacity building
  - Supportive IDT cohorts
  - Integrated youth engagement



# How does it work?

- Getting Started: Kick-off Boot Camp (2 Days in-person)
  - Assigned a one-on-one coach for support throughout Launch
  - Have monthly, virtual connection events and regular coaching sessions
- Phase 1 Check: Virtual Presentations (end of Month 3)
  - Continue monthly, virtual connection events and regular coaching sessions
- Phase 2 Check: In-person pitch presentation (end of Month 6)
  - Focus on pivots and progress toward accelerator goals
  - Continue monthly, virtual connection events and regular coaching sessions
- Graduation event: Demo Day (in-person)



# How do you join?

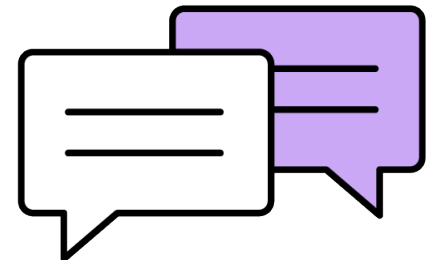
---

- Two-step application process:
  - Step One:
    - Brief online application
  - Step Two:
    - Full application that includes more details and a budget
- We are also planning that applicants will provide pitch presentations after the full application is submitted.
- Applications for cohort 2 are anticipated in **January 2025!**

# How can YOU get involved?

---

- Check out our website [www.launchinnovation.org](http://www.launchinnovation.org) to learn more about our team and sign up for our listserv!
- Contact us at [hello@launchinnovation.org](mailto:hello@launchinnovation.org) for any specific questions.
- Reach out with questions: [ksuellentrop@rti.org](mailto:ksuellentrop@rti.org)





The Policy & Research Group

New Orleans | Seattle

# The Theory & Innovation Support Hub (TISH)

Noor Qaragholi, Lead Research Analyst

Alethia Gregory, Senior Research Analyst



# Mission Statement

*TISH aims to test and refine engaging theory-based programs that are informed by and acceptable to the populations and stakeholders for which they are developed, are feasible to implement, aim to reduce risky sexual behaviors, and aim to positively impact the health and future opportunities of youth and their families.*



# IDT Eligibility

## ■ Organizational Goals

- Develop a theory of change for prototype
- Conduct multiple rounds of testing
- Integrate feedback from youth and consultants
- Relationships with youth-serving orgs

## ■ Development Status of the Prototype

- Aims to fill a gap in programming
- Is informed by the populations for which they have been developed
- Has potential to be feasible
- Aims to reduce risky sexual behavior



# Hub Contributions

- **Access to network**
- **Compensation**
- **Intervention development structure**
- **Guidance and templates for milestones**





# Duration/Commitment of IDTs

- **Duration: 1-2 years based on need**
- **Commitment**
  - 0.25 FTE for team lead
  - Initial contract for 12 months



# How YOU can be involved

- **Intervention Development Teams**
- **Subject Matter Expert Consultants**
- **Stakeholder Advisory Board**
- **Recruiting for Youth Advisory Board**



# Applying to TISH

## ■ Ongoing conversations

- Please reach out if you have a prototype you want to discuss!

## ■ Invitation to apply

## ■ Application process

- Review of prototype by PRG team, youth advisory board, and stakeholder advisory board
- Collaboratively develop a plan of action



The Policy & Research Group

New Orleans | Seattle

**Thanks for your time and attention!**

Noor Qaragholi

Lead Research Analyst

[noor@policyandresearch.com](mailto:noor@policyandresearch.com)

504-XXX-XXXX

# Session Evaluation

Please complete a brief evaluation form for all workshop, forum and networking sessions by scanning the following QR code or visiting the following link:

<https://bit.ly/2024Evaluations>

