

U.S. Department of
Health and Human
Services,
Administration for
Children, Youth and
Families, Family and
Youth Services
Bureau, Adolescent
Pregnancy Prevention
Program Grantee
Conference

Centering Culture: Creation of a Sexual Education Cultural Curriculum Compendium



**Carol Williamson, Blackfeet Manpower
Anna Schmitt, Yarrow**

**2024WARD: Building Brighter
Futures for Today's Youth Leaders
June 25-27, 2024**

The views expressed in written training materials, publications, or presentations by speakers and moderators do not necessarily reflect the official policies of the Department of Health and Human Services; nor does mention of trade names, commercial practices, or organizations imply endorsement by the U.S. Government.

This project has been funded by FYSB, Grant Number 90AT0026-01-00.

Circle Up - Let's Chat!



Meet the Team



Carol
Williamson
Project Director



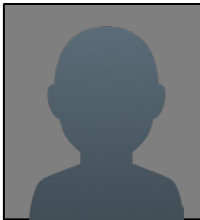
Anna Schmitt
Project Evaluator Lead



Joshlynn Snow
Community
Outreach Technician



Margaret Anne Adams
On Site Project
Evaluator



Erika Mad Plume
Community
Outreach Technician



Mikaela Miller
Project Evaluator

A vertical decorative bar on the left side of the slide, set against a dark red background. It features a sequence of five geometric shapes: a yellow triangle pointing up, a blue triangle pointing up, a yellow diamond with a blue square inside, a blue triangle pointing down, and a yellow triangle pointing down. Each shape is outlined in green.

Objectives

1. Participants will be able to identify the role a culturally relevant curriculum can play in implementation success & supporting the whole student.
2. Participants will be able to understand the importance culture can play in community health and bridging gaps between communities.
3. Participants will understand how to co-produce a cultural curriculum via authentic relationships for their own community.

About the Blackfeet Teen Pregnancy Prevention Program - 2 Services

1. Implementation of the *Respecting the Circle of Life* curriculum into schools within the Blackfeet reservation and surrounding communities.
 - a. Provides STD/HIV education.
 - b. Cultural component developed and implemented to accompany each RCL session



About the Blackfeet Teen Pregnancy Prevention Program - 2 Services

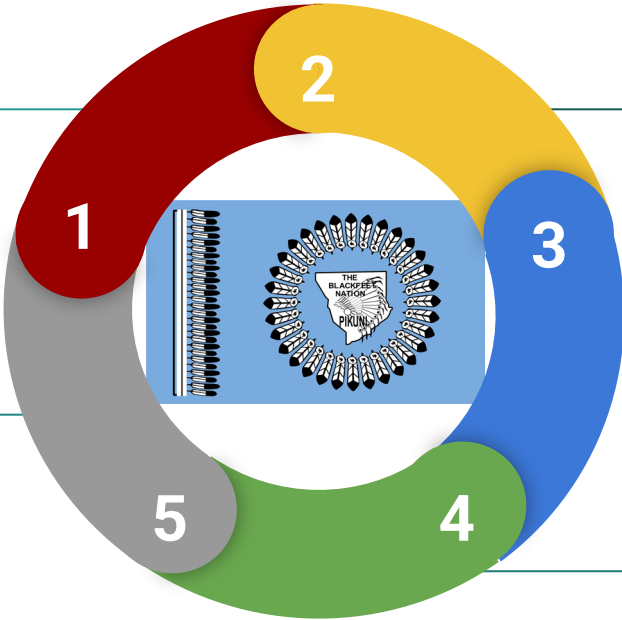
2. Serves pregnant or parenting teens ages 12-20.
 - a. Case Management Support
 - b. Home Visits
 - c. Necessities (Diapers, Car Seats, etc.)
 - d. Life Skills Workshops



Centering Culture

Decision to Amend RCL

Evaluate



Gather Experts (Elders)

Develop Curriculum

Implement Curriculum



Decision to Amend RCL

1




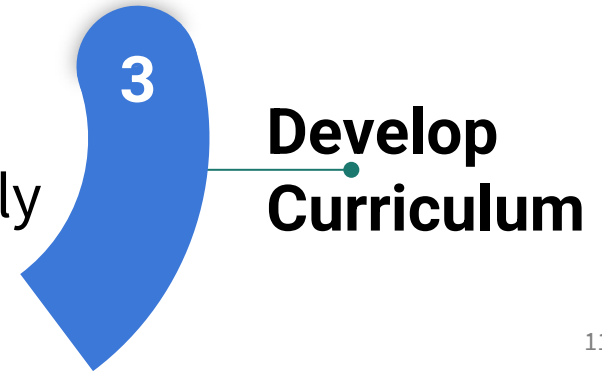


2

Gather Experts (Elders)

- Darnell Rides at the Door
- Anna Bullshoe
- Lorrie Tatsey
- Robert Hall

- 
- A vertical decorative bar on the left side of the slide, set against a dark red background. It features a series of colorful geometric shapes: a yellow triangle with a green border, a blue triangle with a green border, a yellow diamond with a blue center and a green square inside, a blue inverted triangle with a green border, and a yellow inverted triangle with a green border.
- Session 1: Smudge
 - Session 2: Blackfeet Foundation & Cultural Protocol Part 1
 - Session 3: Blackfeet Foundation & Cultural Protocol Part 2
 - Session 4: What does it mean to be Blackfeet? Part 1
 - Session 5: What does it mean to be Blackfeet? Part 2
 - Session 6: [Core Understandings](#)
 - Session 7: Warrior's Story
 - Session 8: Family / Kinship
 - Session 9: How to Close Culturally





Browning
Middle
School



Valier
Junior
High



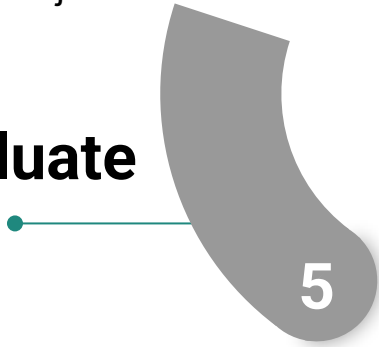
Heart
Butte
School



**Implement
Curriculum**



Evaluate



Activity	Evaluation Measure	Target
2.3 Continue to implement the program / intervention(s) & monitor implementation for necessary adjustments	2.3c Students' perceptions of the RCL curriculum and cultural component	At least 50% of students report a positive perception of the curriculums
	2.3k Cultural assessment questions	Cultural assessment questions incorporated into entry/exit surveys
4.3 The Advisory Coalition will monitor implementation of the cultural curriculum and make changes as necessary	4.3 Cultural curriculum implementation is monitored	Cultural curriculum implemented to 75% fidelity

Questions or Comments?



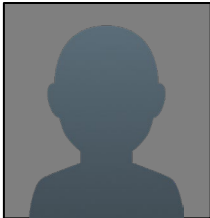
Contact Us



Carol Williamson
cwilliamson@
blackfeetnation.com



Joshlynn Snow
j.snow@
blackfeetnation.com



Erika Mad Plume
erika@
blackfeetnation.com



Anna Schmitt
anna@
yarrowcommunity.org



Margaret Anne
Adams
margaretanne@
yarrowcommunity.org
Mikaela Miller



mikaela@
yarrowcommunity.or
g

Session Evaluation

Please complete a brief evaluation form for all workshop, forum and networking sessions by scanning the following QR code or visiting the following link:

<https://bit.ly/2024Evaluations>

