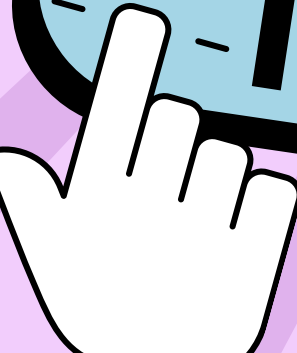


**EMPOWERING  
YOUTH**

**AS A**

**CATALYST  
FOR CHANGE**

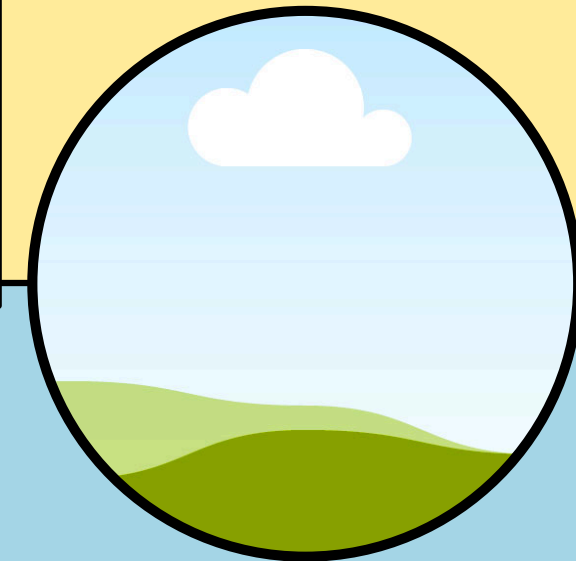


# MEET THE *presenters*



**ESMERALDA SORIA**

HS Sophomore



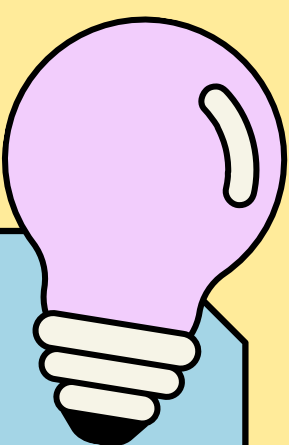
**JOSE VALADEZ**

HS Senior

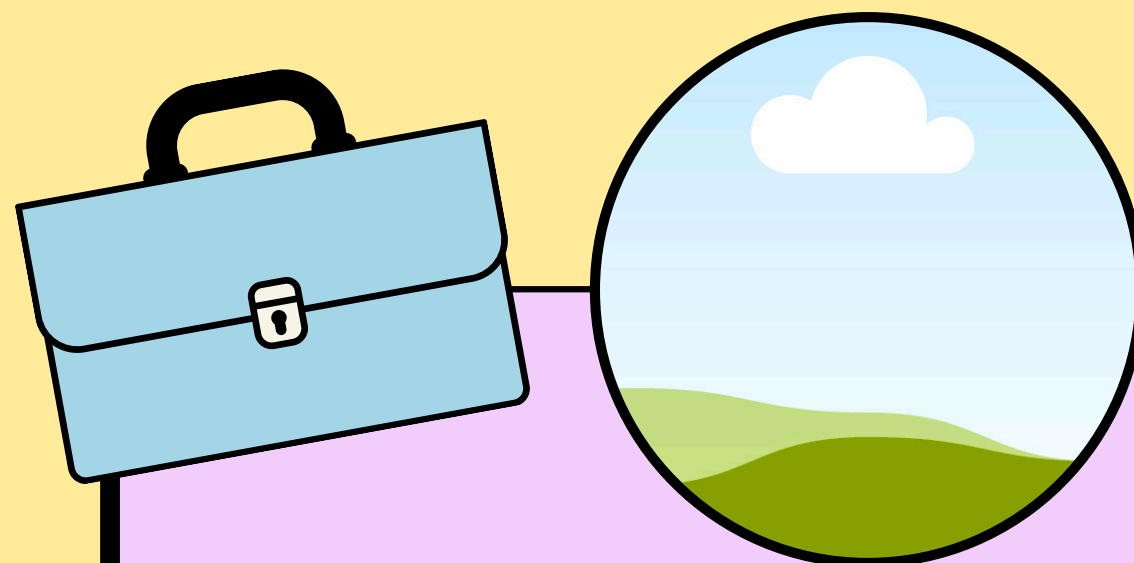


**LEILANY SOTO**

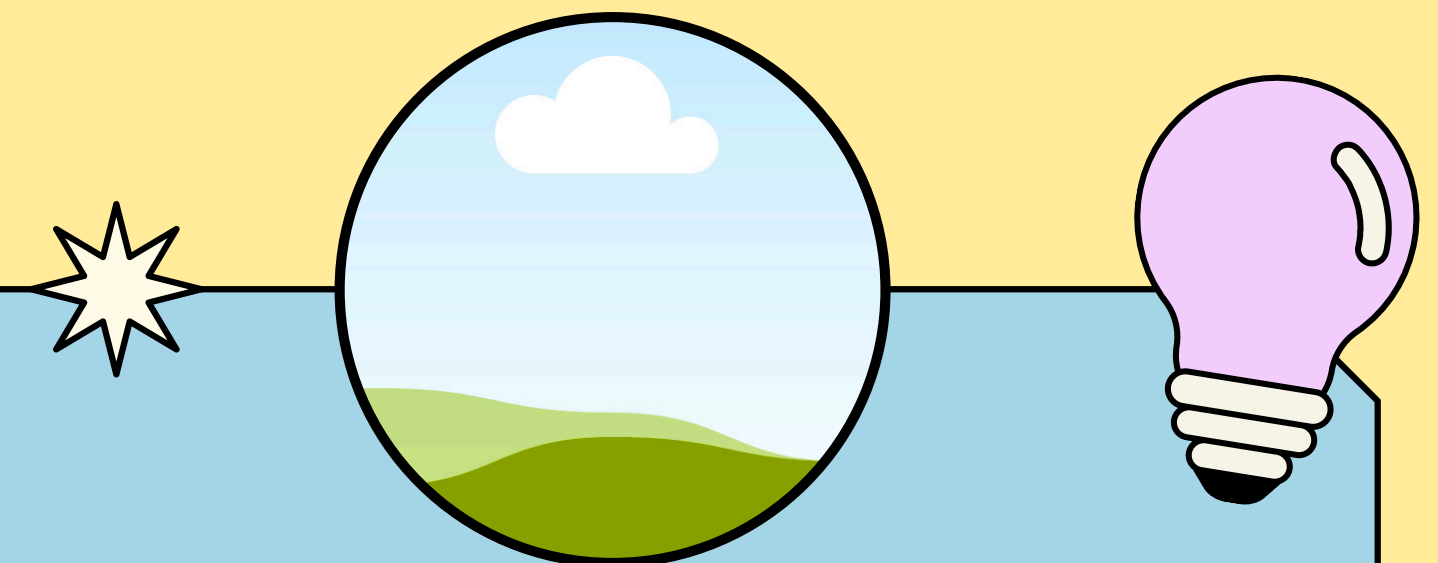

HS Junior




# MEET THE *presenters*



**DR. KATRINA RUGGLES**  
Counselor/Grant Coordinator



**SHARON VALADEZ**  
MEP Coordinator



# Objectives

**Participants will be able to identify the steps to create a shared community vision in partnership with youth and families.**

**Participants will be able to explain the value of engaging youth in the development and delivery of programming.**

**Participants will be able to identify best practices for culturally affirming youth partnership.**

**Participants will be able to access resources to support the implementation of positive youth development that utilizes youth as leaders and partners.**



# ABOUT US

*Center Consolidated Schools, 26JT*

92% youth of color (89% are Latinx, 2% Native American, and 1% Black)

94% qualify for free and reduced lunch

4th in Colorado for children living in poverty (Kids Count Colorado, 2022)

homeless rate: 20.9% (CDE, 2022)

community substance abuse rates: Overdose hospital visits 17.1% (CDPHE, 2021)

community violent crime: 33% (Crime Index 2015-2019)

high mobility rates: 11.3% vs. 9.4% (CDE, 2022)

high child-abuse rates: 11.3% vs. 9% for CO (KCC, 2022)

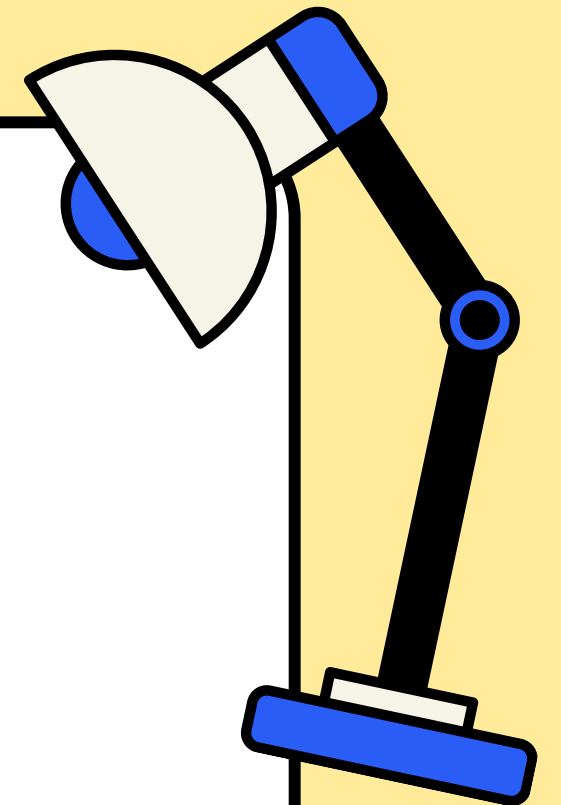
high rates of youth not living with parents: 13.7% versus 6.9% for Colorado (KCC, 2022),

**“NOTHING  
ABOUT US**

Empowerment through an  
equity lens



3Rs:  
Relevant  
Real  
Right Now



**WITHOUT  
US”**





Students Teaching About  
Relationship Success



# Activity

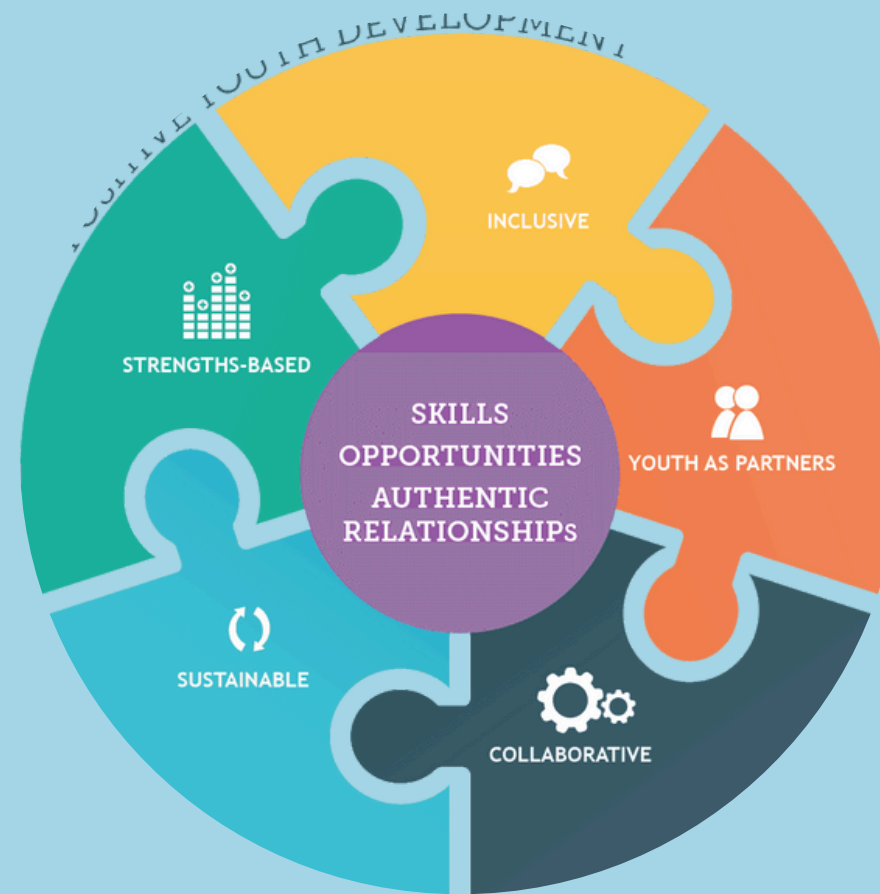


# Essential Elements



WSSC

Whole School, Whole Child, Whole  
Community  
Child in the Center:  
Social, Emotional, Physical,  
Intellectual, Spiritual



PYD

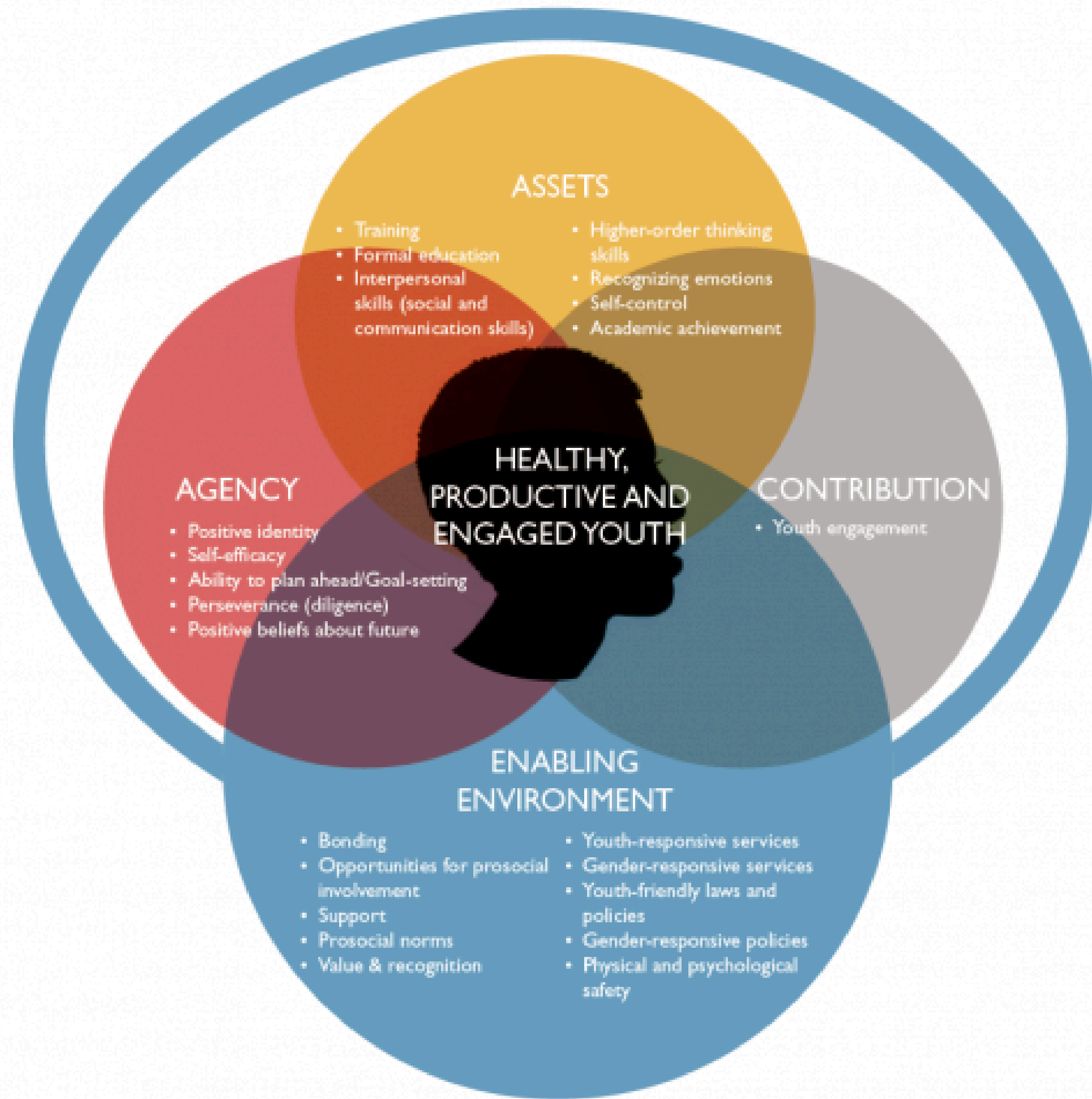
Confidence, Connection,  
Character, Caring, Contribution,  
and Competence



FSCP

- 1) Welcoming all families
- 2) Communicating Effectively
- 3) Supporting Student Success
- 4) Speaking Up for Every Child
- 5) Sharing Power
- 6) Collaborating with the Community





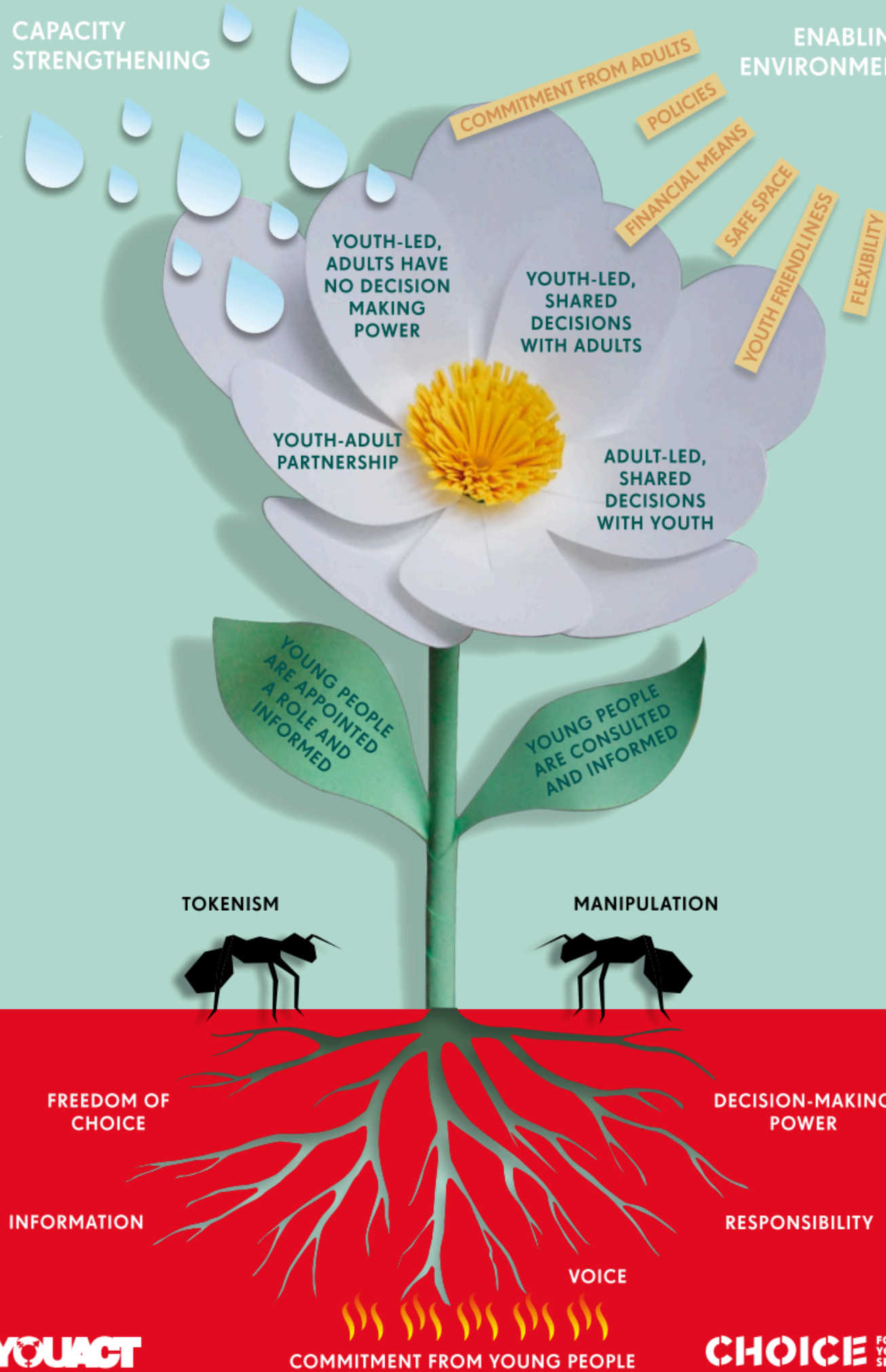
# Positive Youth Development In Action



INCLUSIVITY

CAPACITY STRENGTHENING

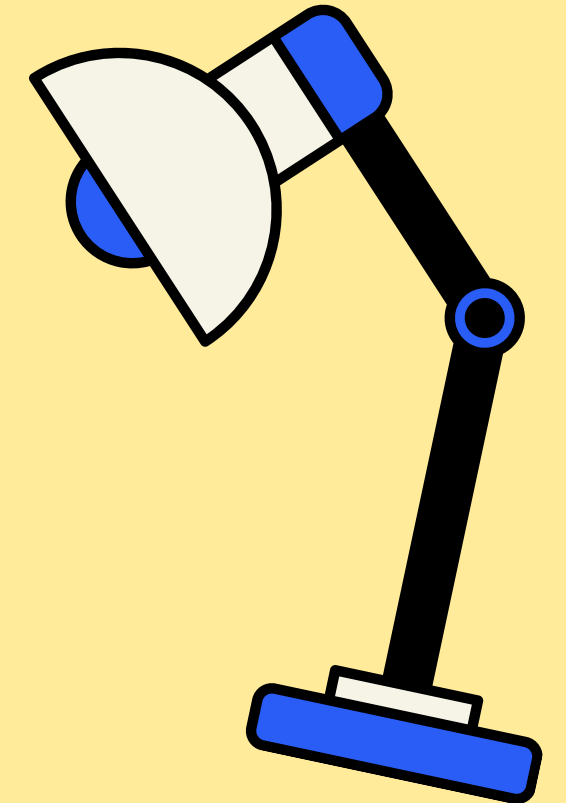
ENABLING ENVIRONMENT



# THE FLOWER OF PARTICIPATION

## MEANINGFUL YOUTH PARTNERSHIP

a tool that uses the metaphor of a blooming flower to describe how MYP can grow and flourish





# Discussion Activity

# Outcomes

## reduced teen pregnancy rates

55.39 (2010 to 8.78 (2023)

CDPHE Maternal & Child Health Data

## reduction in sexual activity

Lifetime: 54% (2010) to 31.1% (2023)

HKCS

## Increase graduation rates

75% (2010) to 87.5% (2023)

CDE graduation statistics

## Post-Secondary

Attendance; 35.7% (2011) to 62.9% in 2021

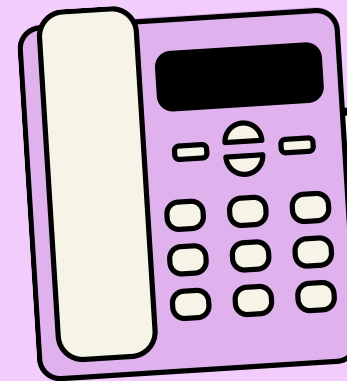
Persistence: 24% to 32.2%

Remediation: 80% to 57.9%

CDHE

**CONTACT**

**US**



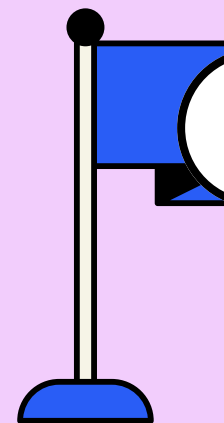
719-937-5093



centervikingyouthclub.com



CVYC@CV-Youth.Club



550 Sylvester Ave, Center, CO 81125



# Evaluation

**Please complete a brief evaluation form for all workshops, forum and networking sessions by scanning the following QR code or visiting the following link:**

**<https://bit.ly/2024Evaluations>**

