



PREP

SNAPSHOT

Personal Responsibility Education Program (PREP) Evaluation

OPRE Report #2018-45
April 2018

Inputs and Outcomes: PREP Programs Serving Highly Vulnerable Youth

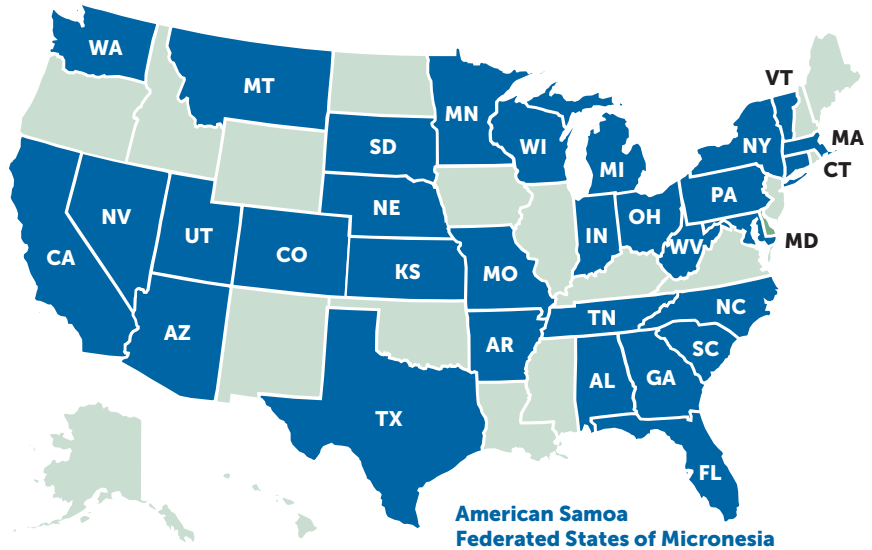
PREP grantees and their program providers are encouraged to serve highly vulnerable populations, including youth in foster care, youth in adjudication systems, homeless or runaway youth, pregnant or parenting youth, lesbian, gay, bisexual, transgender, and questioning (LGBTQ) youth, youth in residential treatment for mental health issues, and youth who have trouble speaking or understanding English.

141 programs across 33 states and territories

primarily served at least one highly vulnerable population.

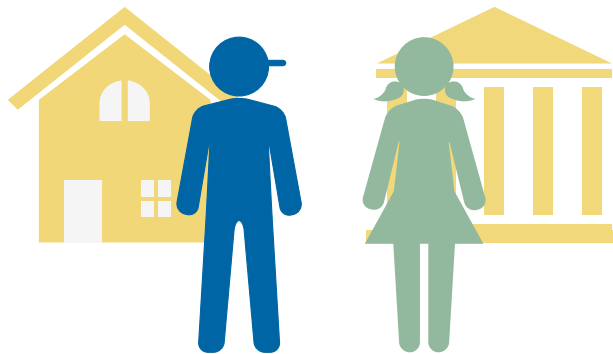
These programs reached about **15,500 youth** annually.^a

^a Programs that "primarily served" a highly vulnerable population are those that reported that at least half of the youth they served were from one or more highly vulnerable population. Program data do not identify whether each individual participant is or is not from a highly vulnerable population.



Among programs serving highly vulnerable populations, most served youth in foster care or adjudicated youth^b

51%
served primarily youth in foster care



33%
served primarily adjudicated youth

About one in ten programs primarily served youth in each of the following groups: in residential treatment for mental health, pregnant or parenting, homeless or runaway, identified as LGBTQ, and trouble speaking or understanding English^b

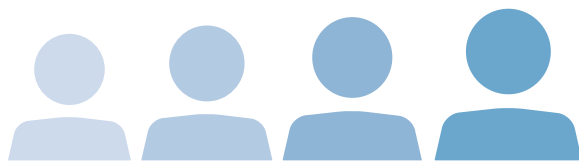
^b Programs can serve multiple populations.

Programs that serve highly vulnerable populations mostly take place in out-of-school settings



Programs that serve highly vulnerable populations are serving older youth who already have engaged in risky sexual behaviors before PREP

Percentage of youth ages 15–18



Two-thirds (67 percent) of youth in these programs have been sexually active, compared to 41 percent of high school-age youth nationally

Among sexually active youth, almost one-third (29 percent) had ever been pregnant or gotten someone pregnant

More than one-third of sexually active youth did not reliably use any birth control (41 percent) or condoms (34 percent) before participating in PREP

Participants reported positive outcomes after participating in PREP programs

Following the program, about half (49 percent) of these youth reported they were less likely to have sex in the next six months

A large majority reported they were more likely to use birth control (67 percent) or condoms (73 percent) if they have sex



Source: 2014–2015 PREP participant entry and exit survey and attendance, reach, and dosage data reported by SPREP, TPREP, and CPREP grantees.

Contract Number: HHSP23320110011YC

This brief is in the public domain. Permission to reproduce is not necessary. Suggested citation: Murphy, Lauren, Susan Zief, and Lara Hulseley (2018). "Personal Responsibility Education Program (PREP) Snapshot -- Input and Outcomes: PREP Programs Serving Highly Vulnerable Youth." OPRE Report # 2018-45, Washington, DC: Office of Planning, Research and Evaluation, Administration for Children and Families, U.S. Department of Health and Human Services.

The views expressed in this publication do not necessarily reflect the views or policies of the Office of Planning, Research and Evaluation, Family and Youth Services Bureau, the Administration for Children and Families, or the U.S. Department of Health and Human Services.

This report and other reports sponsored by the Office of Planning, Research and Evaluation are available at <http://www.acf.hhs.gov/programs/opre>.